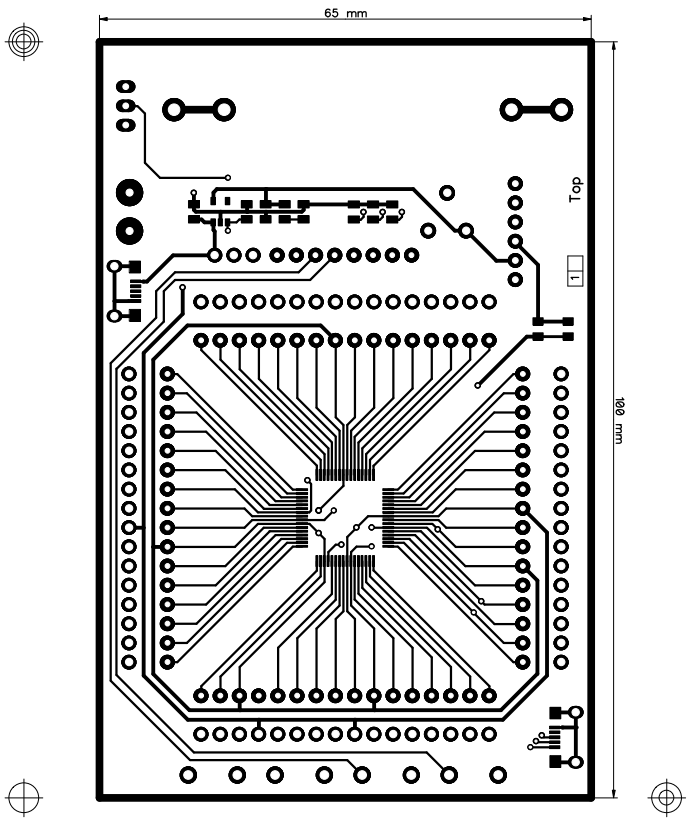
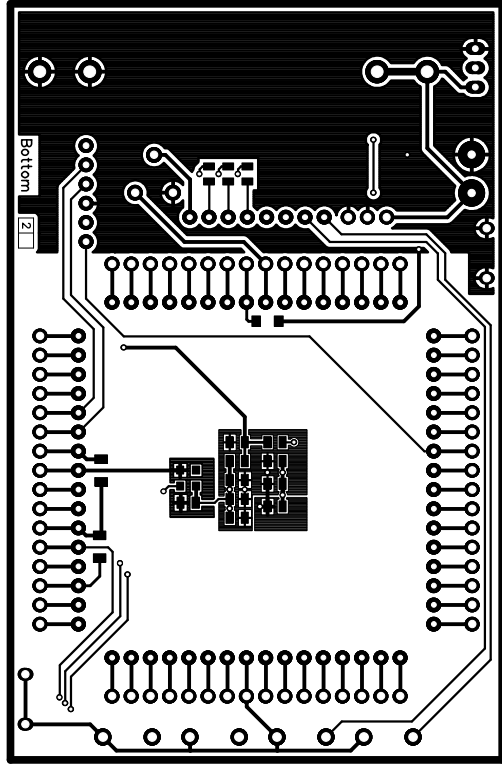


JP1 Jumper for PIC32MK  
 Not populate for PIC24EP/dsPIC33EP  
 JP2 Jumper for PIC32MKxxxxGPx  
 Not populate for PIC32MKxxxxMC/PIC24EP/dsPIC33EP  
 C3 Jumper for PIC32MK  
 C10uF tantalum for PIC24EP/dsPIC33EP

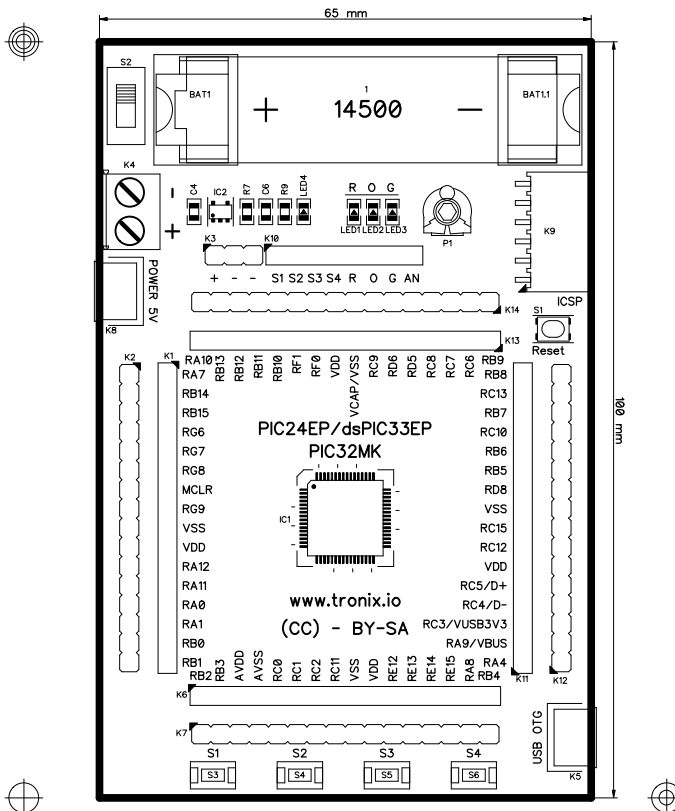
PIC24EP64GPx06	dsPIC33EP64GPx06	PIC32MK0512GPD064
PIC24EP128GPx06	dsPIC33EP128GPx06	PIC32MK0512GPE064
PIC24EP256GPx06	dsPIC33EP256GPx06	PIC32MK0512MCF064
PIC24EP512GPx06	dsPIC33EP512GPx06	PIC32MK1024GPD064
PIC24EP64MCx06	dsPIC33EP64MCx06	PIC32MK1024GPE064
PIC24EP128MCx06	dsPIC33EP128MCx06	PIC32MK1024MCF064
PIC24EP256MCx06	dsPIC33EP256MCx06	
PIC24EP512MCx06	dsPIC33EP512MCx06	



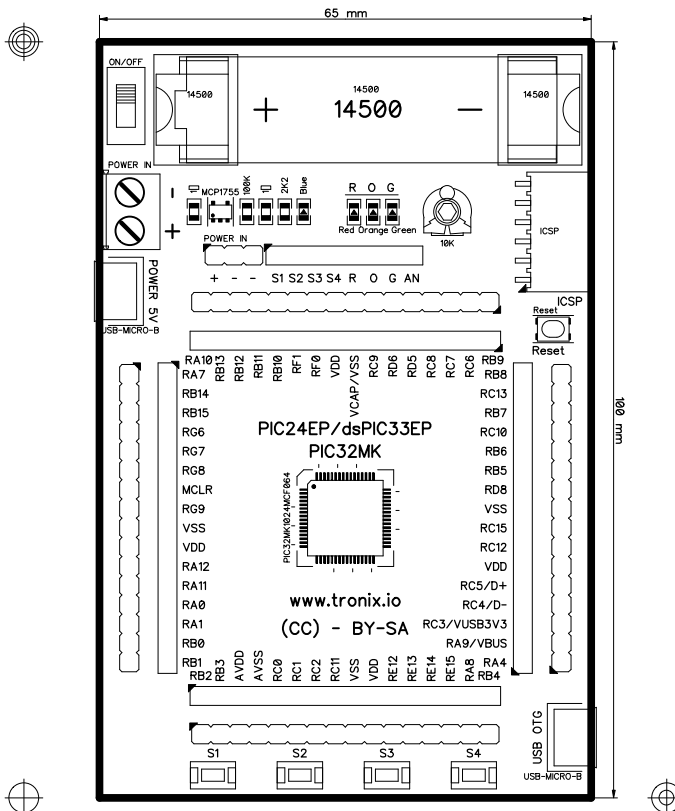
PIC32MK - (02/2018) - SCALE: 100%



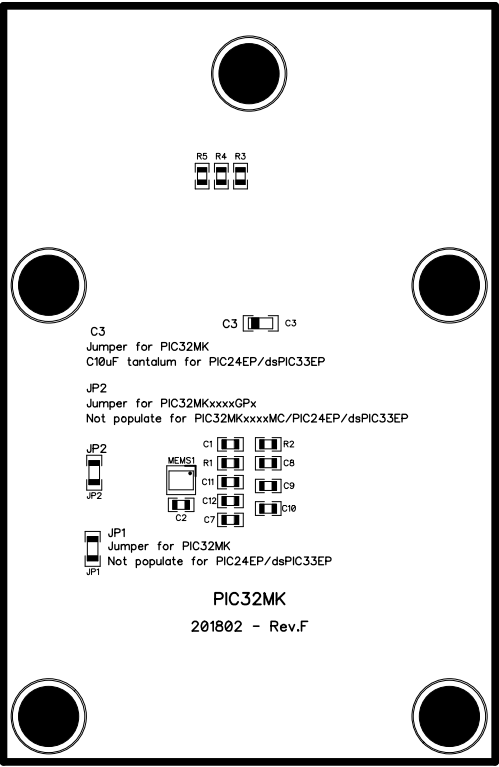
PC32MK - (05\5018) - 2CALTE: 100%



PIC32MK - (02/2018) - SCALE: 100%



PIC32MK - (02/2018) - SCALE: 100%



R5 R4 R3

C3 c3

C3  
Jumper for PIC32MK  
C10uF tantalum for PIC24EP/dsPIC33EP

JP2  
Jumper for PIC32MKxxxxGPx  
Not populate for PIC32MKxxxxMC/PIC24EP/dsPIC33EP

JP2 JP2

MEMS1

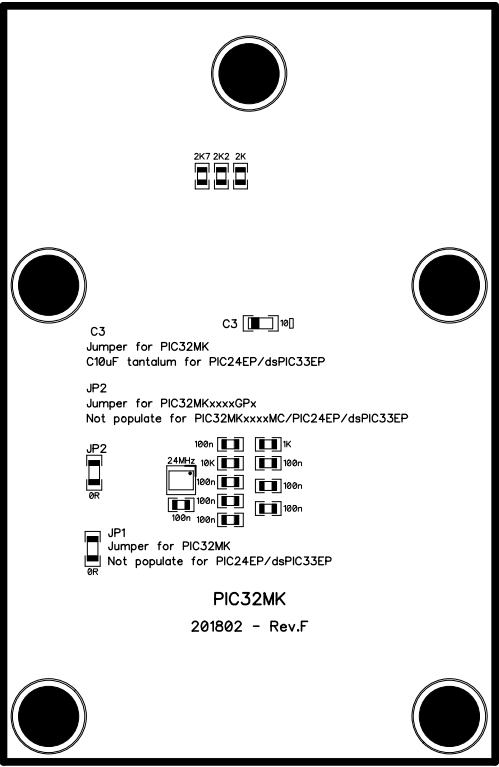
C1 R2   
R1 C8   
C11 C9   
C12 C10   
C2 C7

JP1 JP1

JP1  
Jumper for PIC32MK  
Not populate for PIC24EP/dsPIC33EP

PIC32MK  
201802 - Rev.F

PIC32MK - (05\5018) - 2SCALE: 100%



PIC32MK - (05\5018) - 2SCALE: 100%